

Profil transversal tip. Tip 1

Left/ Stinga

The diagram illustrates a cross-section of a road with the following components and dimensions:

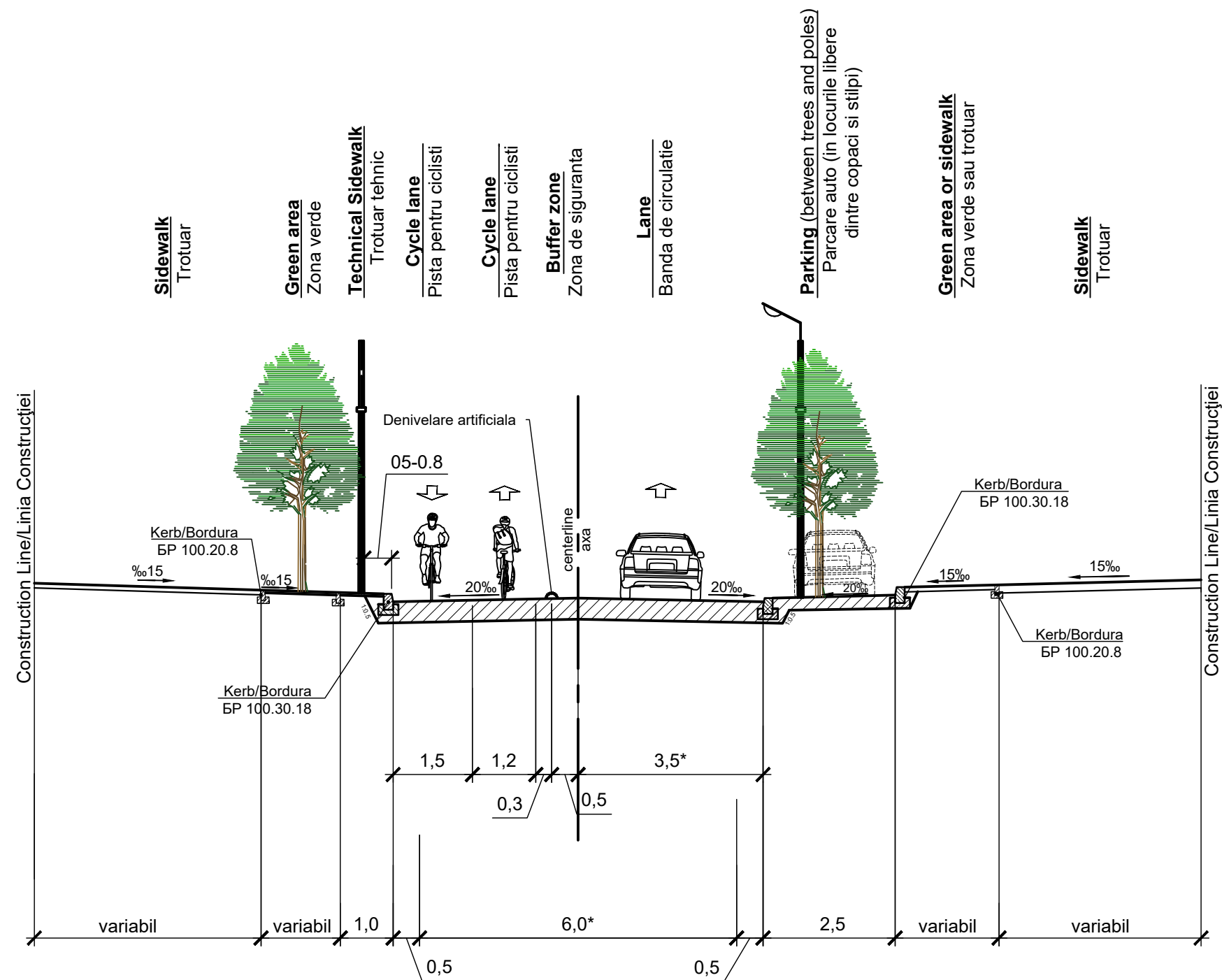
- Central Lane:** 3.5m wide, with a 20% slope and a centerline/axa.
- Cycle Lanes:** 1.2m wide, flanking the central lane, with a 20% slope.
- Buffer Zone:** 0.3m wide, separating the cycle lanes from the central lane.
- Sidewalks:** 1.5m wide, flanking the cycle lanes, with a 20% slope.
- Green Areas:** 0.5m wide, flanking the sidewalks, with a 20% slope.
- Dimensions:**
 - Central lane width: 3.5*
 - Cycle lane width: 1.2
 - Buffer zone width: 0.3
 - Sidewalk width: 1.5
 - Green area width: 0.5
 - Total width: 6.0*
- Labels:**
 - Kerb/Bordura BP 100.20.8:** Located at the outer edges of the sidewalks.
 - Kerb/Bordura BP 100.30.18:** Located at the edges of the cycle lanes.
 - Denivelare artificiala:** Artificial leveling, indicated by arrows pointing to the 0.05-0.8 slope.

PC 1+68 -PC 1+84
PC 1+90 -PC 2+08
PC 2+82 - PC 3+35
PC 3+42 -PC 3+60
PC 5+72 - PC 6+32
PC 6+40 - PC 6+68
PC 6+85 - PC 6+97
PC 7+12 - PC 7+26
PC 7+50 - PC 7+96
PC 10+57 - PC 11+85
PC 12+09 -PC 12+30
PC 12+37 -PC 12+75
PC 12+89 -PC 13+30
PC 13+70 - PC 14+06
PC 14+31 - PC 14+89
PC 15+23 - PC 15+52
PC 15+60 - PC 15+96
PC 16+03 - PC 16+44
PC 16+71 - PC 17+12
PC 17+28 - PC 17+92
PC 18+18 - PC 18+30
PC 18+44 - PC 18+59
PC 18+66 - PC 19+08
PC 19+15 - PC 20+03
PC 20+21 - PC 20+42
PC 20+49 -PC 20+93
PC 27+67 -PC 28+05
PC 28+24 - PC 28+48
PC 28+73 - PC 28+56
PC 29+12 - PC 29+49
PC 29+80 - PC 29+88

Pe sectoarele PC 14+25 - 15+00; Pc 26+60 - 27+40 latimea partii carosabile este de 9m.

						3072 - DA			
						Reparația capitală a str.31 August 1989 din Chișinău Modificarea conform scrisorii DGTP si CC nr.06-2-543 din 22.12.2020			
Mod.	Nr.sec	Coala	Nr.doc	Semnat	Data				
						Road/Compartimentul drum	<i>Faza</i>	<i>Coala</i>	<i>Coli</i>
							PE	12	
ISP		Vilcinski D.			03.21	Typical Cross-sections Profile transversale tip S1:100	IMP "CHISINAUPROIECT"		
Elaborat		Eftodii V.			03.21				

Typical Cross-section. Type 2
Profil transversal tip. Tip 2



Will be used on sections
Se va aplica pe sectoarele:

- PC 0+60 - PC 0+90
- PC 1+30 - PC 1+48
- PC 1+84 - PC 1+90
- PC 2+08 - PC 2+63
- PC 3+35 - PC 3+42
- PC 4+22 - PC 4+68
- PC 5+20 - PC 5+28
- PC 6+32 - PC 6+40
- PC 6+68 - PC 6+85
- PC 6+97 - PC 7+12
- PC 9+33 - PC 9+96
- PC 12+30 - PC 12+37
- PC 12+75 - PC 12+89
- PC 14+06 - PC 14+31
- PC 15+52 - PC 15+60
- PC 16+95 - PC 16+03
- PC 17+12 - PC 17+28
- PC 18+30 - PC 18+44
- PC 18+59 - PC 15+66
- PC 19+08 - PC 19+15
- PC 20+03 - PC 20+21
- PC 20+42 - PC 20+49
- PC 21+26 - PC 22+68
- PC 22+81 - PC 23+02
- PC 23+33 - PC 24+26
- PC 24+44 - PC 25+13
- PC 25+47 - PC 26+18
- PC 26+27 - PC 26+88
- PC 27+04 - PC 27+11
- PC 28+16 - PC 28+24
- PC 28+48 - PC 28+73
- PC 29+73 - PC 29+80

Nota: Latimea trotuarelor si a zonei verzi conform sutiatiei existente (Amplasarea copacilor, stilpilor)
* Latimea partea carosabila 8.0m pe sectorul Pc 12+00.00 - Pc 15+00.00Pe sectoarele PC 14+25 - 15+00;
Pc 26+60 - 27+40 latimea partii carosabile este de 9m.

Modificat	Nr. mod.	Coala	Nr. doc.	Semnatura	Data

Profile transversale tip
S 1:100

Coala

13

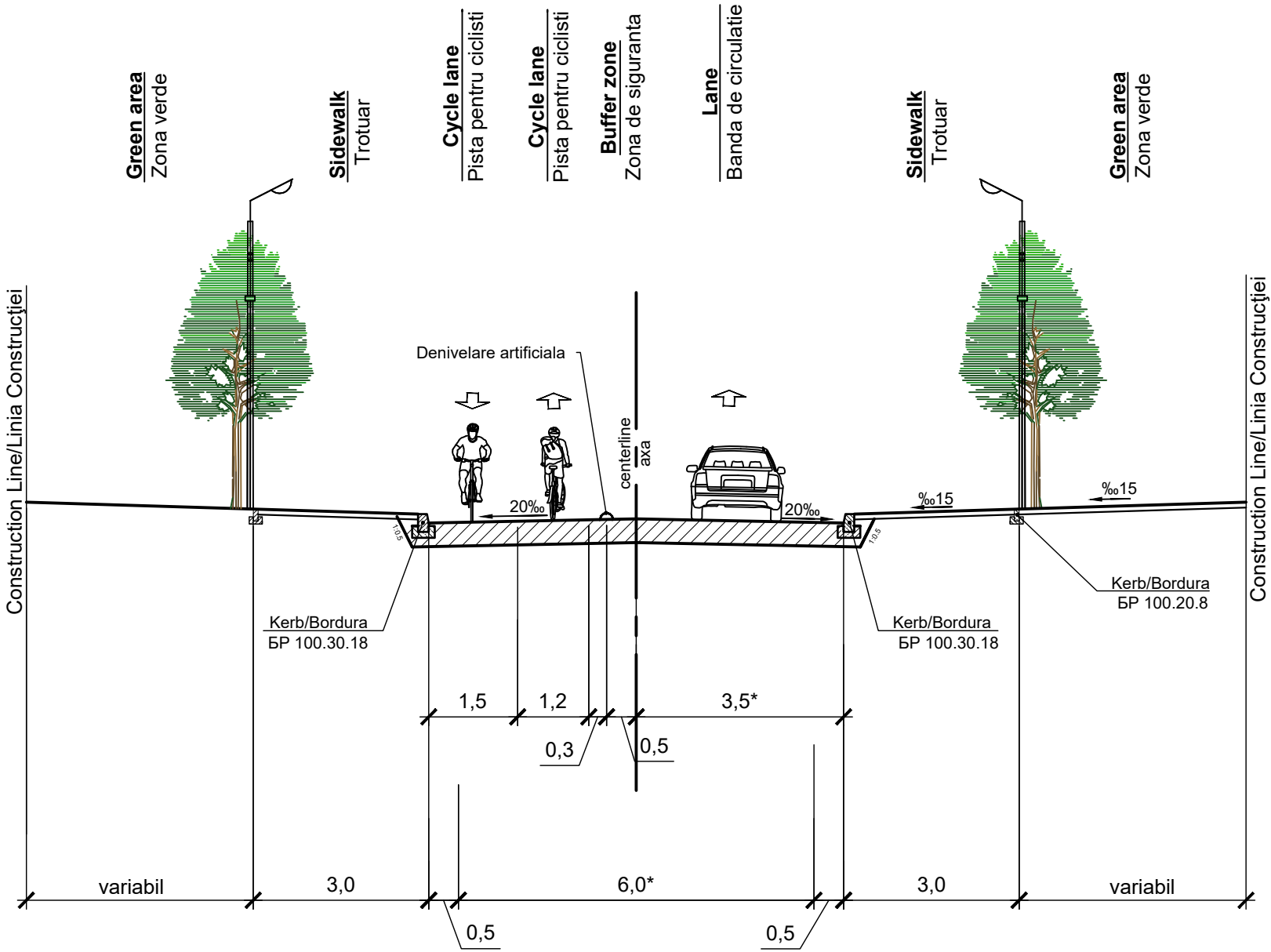
Typical Cross-section. Type 3
Profil transversal tip. Tip 3

Will be used on sections
Se va aplica pe sectoarele:

- Left/ Stinga
PC 6+70 - PC 7+50
PC 7+96 - PC 9+03
PC 10+39 - PC 10+44
PC 11+83 - PC 12+20
PC 23+28 - PC 25+42
PC 26+67 - PC 27+67
PC 29+91 - PC 30+00

Will be used on sections
Se va aplica pe sectoarele:

- Right/ Dreapta
PC 7+96 - PC 9+33
PC 9+96 - PC 10+36
PC 13+30 - PC 13+70



Nota: Latimea trotuarelor si a zonei verzi conform sutiatiei existente (Amplasarea copacilor, stilpilor)

* Latimea partea carosabila 8.0m pe sectorul Pc 12+00.00 - Pc 15+00.00

Pe sectoarele PC 14+25 - 15+00; Pc 26+60 - 27+40 latimea partii carosabile este de 9m.

Modificat	Nr. mod.	Coala	Nr. doc.	Semnatura	Data

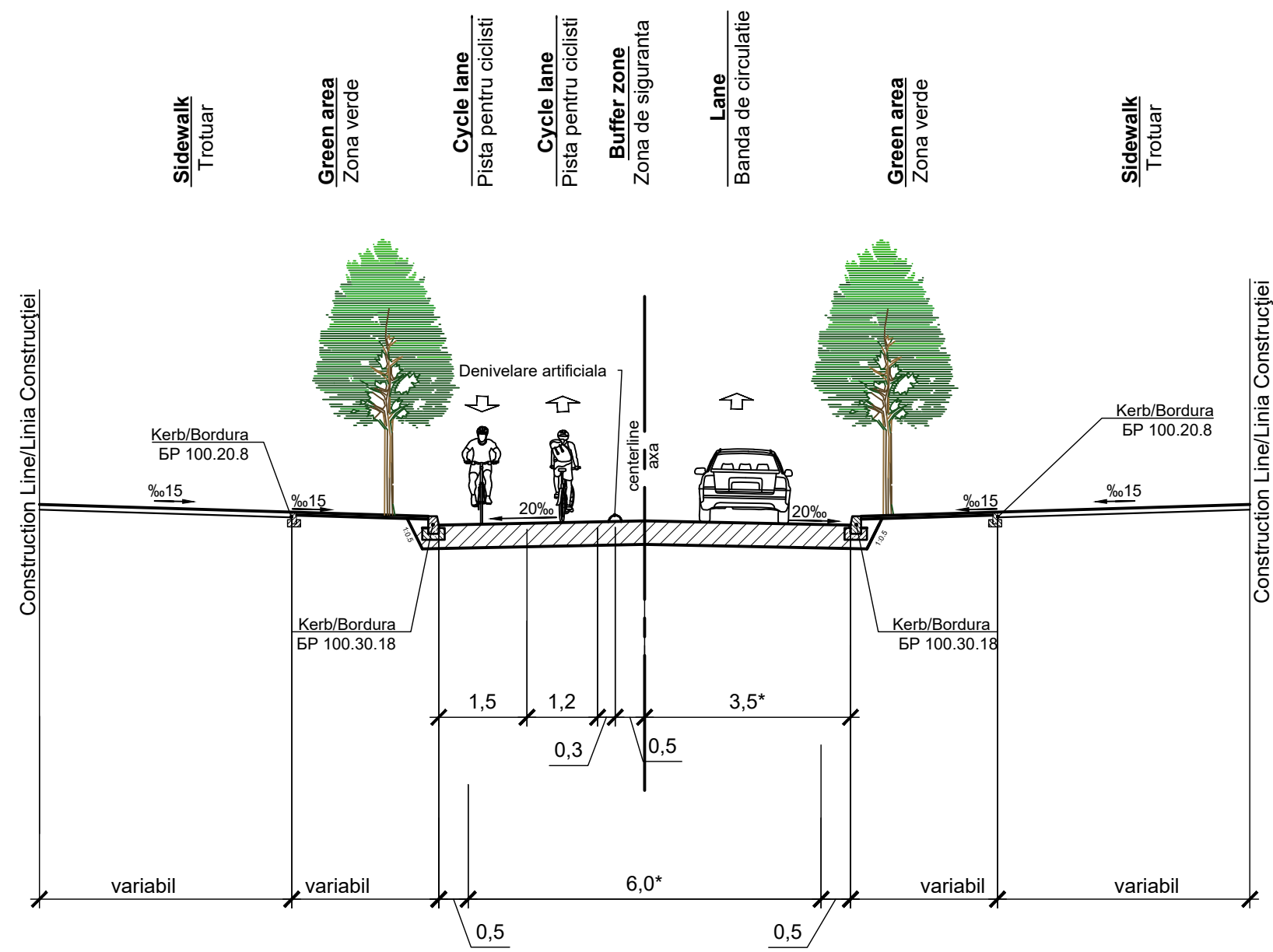
Profile transversale tip
S 1:100

Coala

14

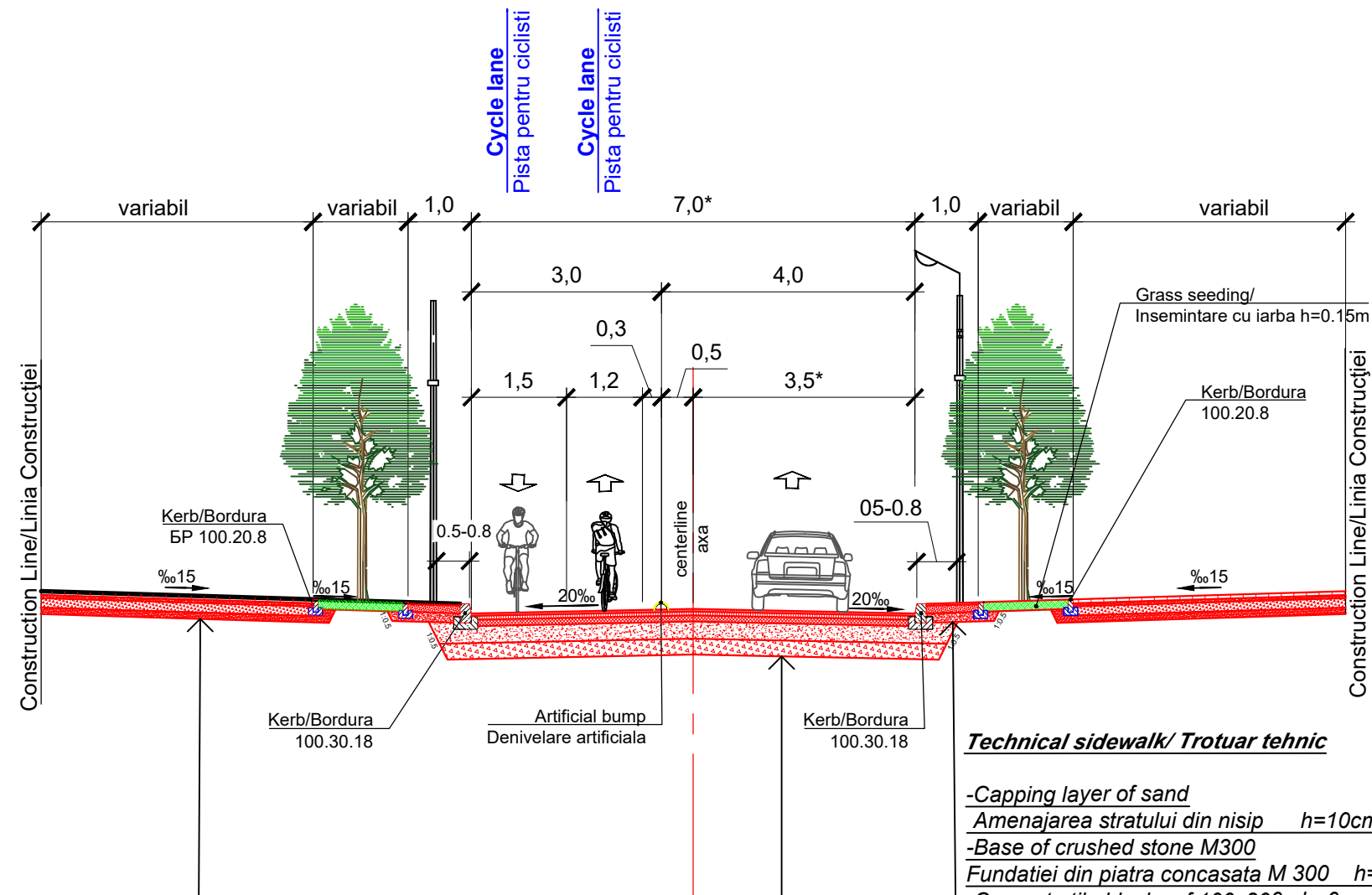
Typical Cross-section. Type 4
Profil transversal tip. Tip 4

Will be used on sections	Will be used on sections
Se va aplica pe sectoarele:	Se va aplica pe sectoarele:
Left/ Stinga	Right/ Dreapta
PC 9+03 - PC 10+39	PC 0+0 -PC 0+60
PC 10+44 - PC 11+83	PC 0+90 - PC 1+30
PC 14+74- PC 14+90	PC 2+63 - PC 2+82
PC 16+73 - PC 17+90	PC 3+80 - PC 4+22
PC 18+15 - PC 19+50	PC 4+68 - PC 5+20
PC 19+70 - PC 20+93	PC 5+28 - PC 5+75
PC 21+75 - PC 23+09	PC 21+17 - PC 21+26
PC 25+42 - PC 26+67	PC 22+68 - PC 22+81
PC 27+67 - PC 28+70	PC 23+02 - PC 23+08
	PC 24+26 - PC 24+44
	PC 25+43 - PC 25+47
	PC 26+18 - PC 26+27
	PC 26+88 - PC 27+04
	PC 27+11 - PC 27+30
	PC 28+05 - PC 28+16
	PC 29+49 - PC 29+73



Nota: Latimea trotuarelor si a zonei verzi conform sutiatiei existente (Amplasarea copacilor, stilpilor)
* Latimea partea carosabila 8.0m pe sectorul Pc 12+00.00 - Pc 15+00.00
Pe sectoarele PC 14+25 - 15+00; Pc 26+60 - 27+40 latimea partii carosabile este de 9m.

		In loc N inv.
	Semnatura, data	
N inv original		



Sidewalk/ Trotuar

- Capping layer of sand
Amenajarea stratului din nisip h=10cm
- Base of crushed stone M300
Fundatiei din piatra concasata M 300 h=15cm
- Concrete tile blocks of 100x200, h=6cm on a leveling layer of cement and sand mixture 1:6 h=5cm
Pavele de beton de of 100x200 h=6cm pe un strat de nisip cu ciment 1:6 h=5cm

Technical sidewalk/ Trotuar tehnic

- Capping layer of sand
Amenajarea stratului din nisip h=10cm
- Base of crushed stone M300
Fundatiei din piatra concasata M 300 h=15cm
- Concrete tile blocks of 100x200, h=6cm on a leveling layer of cement and sand mixture 1:6 h=5cm
Pavele de beton de of 100x200 h=6cm pe un strat de nisip cu ciment 1:6 h=5cm

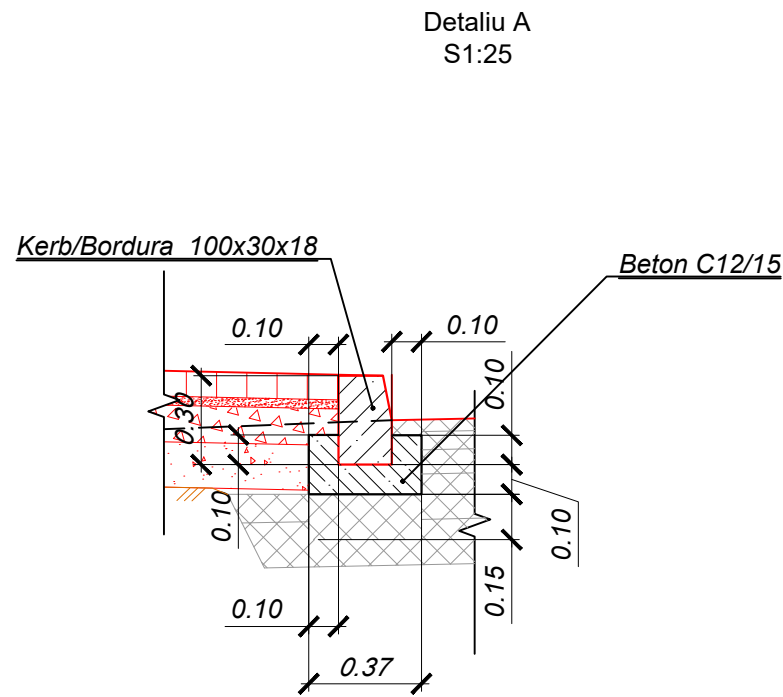
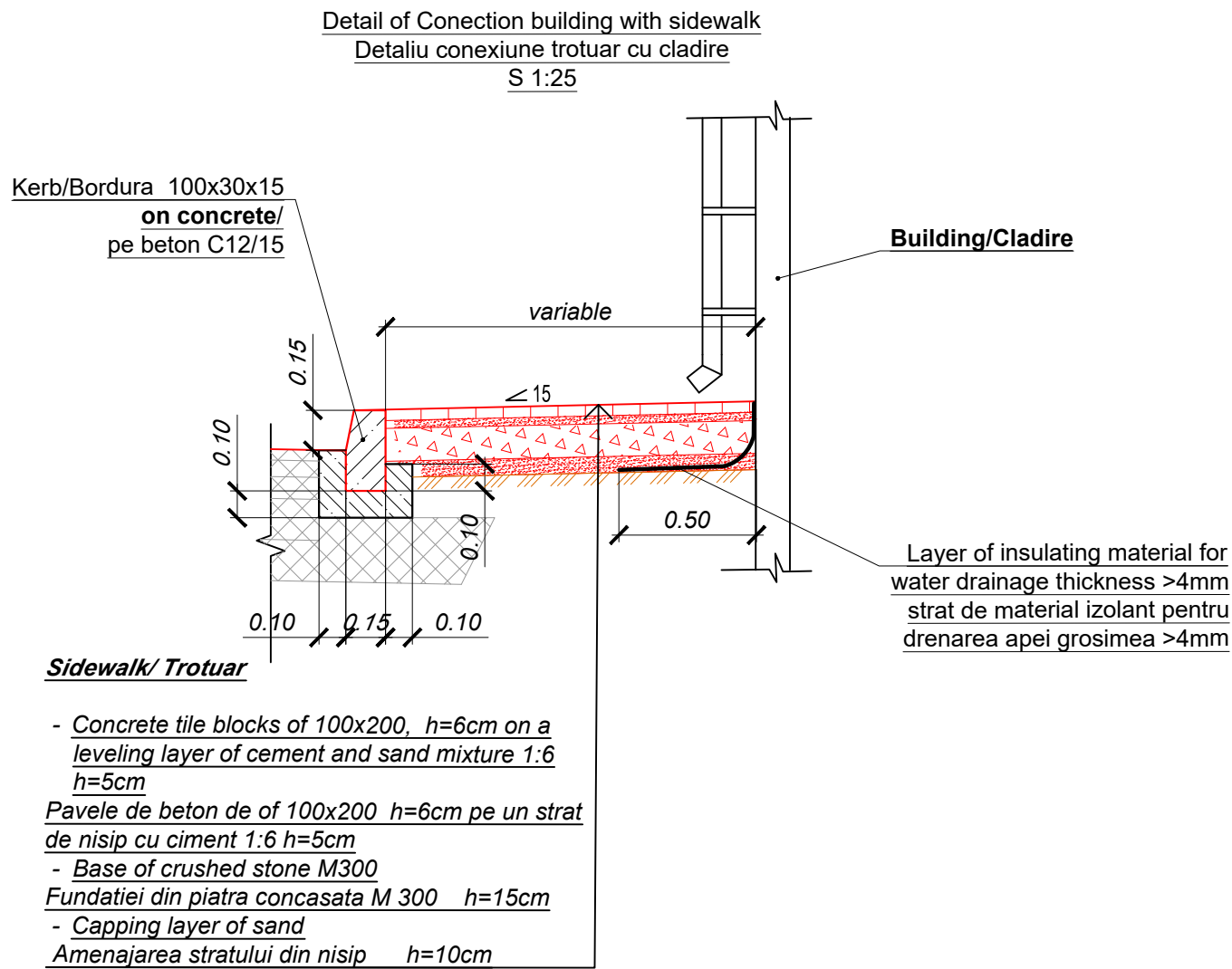
Carriageway/ Partea carosabila

- Subbase of stone-gravel-sand mixture (balast)
Fundatia din amestec de piatra concasata-prundis de riu si nisip - h=15 cm
- Mixture of crushed stone
Amestec din piatra sparta, SM EN 13242+A1 h - 20 cm
- Cold recycled asphalt concrete) adding SM EN 13242+A1 crushed stone - 35%, and cement according CP D. 02.12-2013) mixing and transportation)
Asfalt recilat la rece cu adaos de piatra concasata SM EN 13242+A1- 35%, malaxarea si ciment conform CP D. 02.12-2013) h= 18cm (20cm**)
- Binder course of asphalt concrete BAD 31.5 50/70, SM EN 13108-1
Binder din beton asfaltic BAD 31.5 50/70, SM EN 13108-1 h=6cm
- Wearing Course: Stone Mastic Asphalt Concrete
Strat de uzura din beton asfaltic pe bază de mastic bituminos MAS16 50/70 SM EN 13108-5 h - 4cm

Nota: Width of sidewalks and of a green zone according existing situation(position of trees, pillars)
Latimea trotuarelor si a zonei verzi conform sutiatiei existente (Amplasarea copacilor, stilpilor)
* Width of lane -5.0m, and of a carriageway - 8.0m on section Pc 12+00.00 - Pc 15+00.00
* Latimea benzii de circulatie este de 5.0m si partea carosabila 8.0m pe sectorul Pc 12+00.00 - Pc 15+00.00
** On section Pc 11+90 -Pc15+15 thickness of layer Cold recycled asphalt concrete) adding SM EN 13242+A1 is 20cm
** Pe sectorul Pc 11+90 -Pc15+15 grosimea Asfalt recilat la rece cu adaos de piatra concasata SM EN 13242+A1 este de 20cm

						3072 - DA				
						Reparația capitală a str.31 August 1989 din Chișinău Modificarea conform scrisorii DGTP si CC nr.06-2-543 din 22.12.2020				
<i>Mod.</i>	<i>Nr.sec</i>	<i>Coala</i>	<i>Nr.doc</i>	<i>Semnat</i>	<i>Data</i>					
						Road/Compartimentul drum		<i>Faza</i>	<i>Coala</i>	<i>Coli</i>
								<i>PE</i>	16	
ISP	Vilcinski D.				03.21	Construction of road system Construcția sistemului rutier S1:100		IMP "CHISINAUPROIECT"		
Elaborat	Eftodii V.			03.21						

N inv.original	Semnatura, data	In loc N inv.



						Construction of road system Construcția sistemului rutier S1:100	Coala
Modificat	Nr. mod.	Coala	Nr. doc.	Semnatura	Data		17